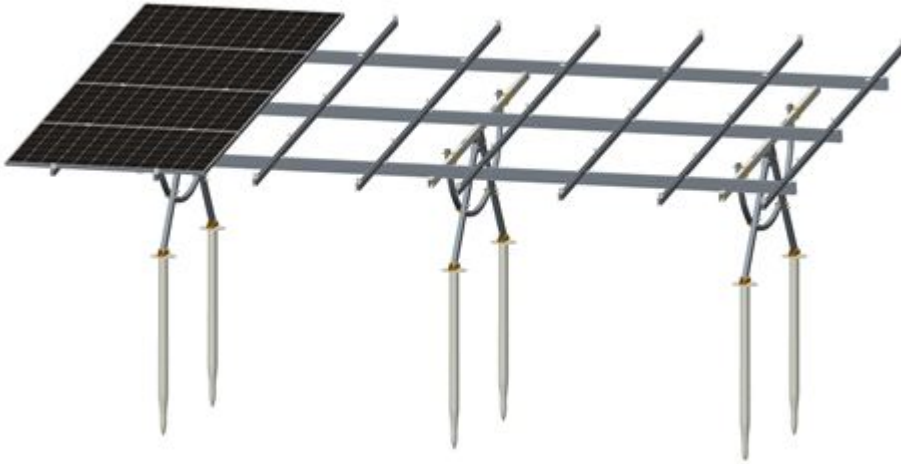


Angle adjustable type ground support system AG2



Specification and Requirements:

Specification	Requirements
<ol style="list-style-type: none">1. Wind Load: 34m/s2. Snow Load: 0.4KN/ m²3. Span Range: 2.3m~3.1m4. Warranty: 10 years5. Installation Angel Error Range: $\pm 2^\circ$6. Adjust Angle Range: 20°、30°、40°	<ol style="list-style-type: none">1. Install Site: Open Ground2. Rail Material: Hot zincification steel (Q235B)3. Screw bolt, Screw Nut Material : Hot-dip galvanized4. Solar panel: Framed or Unframe5. Installation Direction: Vertical or Horizontal6. Design Standard: GB50009-2012, DIN1055, IBC2006, AS/NZS1170